

## 1. SUMMARIZE

FH Helical Gear Box / Geared Motor series is a range of inline gear units which is a next generation mechano-electrical integrated product, designed based on the compact modular system. The FH series Helical Gear units are well known to be the unmatched range of helical geared motors and speed reducers as it is capable of exhibiting optimum torque density, product range, price effectiveness and gear compactness.

FH series Helical Gear units can be connected with wide variety of motors such as normal motor, brake motor, IEC motor and etc., This kind of product is widely used in drive fields such as textile, food processing units, beverage, chemical industry, material handling equipments, automobile, metallurgy, pharma, environment- protection, logistics and many more.

Product development is assured by qualified professionals using latest design software / systems / tools.

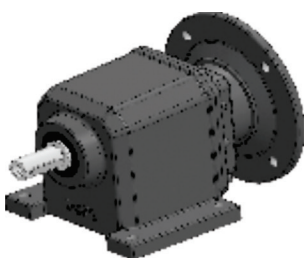
Significant production flexibility guarantees a rapid flow of components with high level quality with the usage of state of art machineries and equipments.

We have In-house well equipped testing facilities for quality check & development aimed to ensure effective performances.

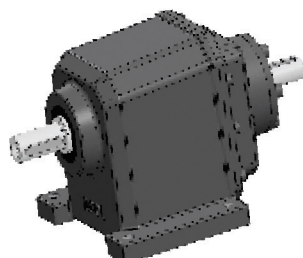
### 1.1 Product Features:

- High durability and reliability
- Effective space utility, refined design
- High torque
- Quite and noiseless operation
- Accepts standard IEC motors
- Versatile mounting
- Wide range of ratios
- Gears from hardened and case-hardened steel
- Mechanical rating - 0.12KW to 15KW
- Powder coated blue colour grade of RAL 5015

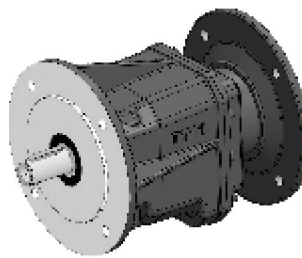
## 2. PRODUCT STRUCTURE PICTURE



FH-F- - - IEC



FH-F- - - ISS



FH-FL- - - IEC



FH-FL- - - ISS