

Lincoln Lub Van



The Lincoln Advantage

Lincoln offers you complete turnkey solutions in lubrication systems right from customized design and engineering, manufacturing, erection & commissioning to post sales service support through the largest trained technical manpower in the industry. Our quality systems are ISO 9001 : 2008 registered and our state of art manufacturing and testing facilities ensure that you get international quality products in a “value for money package”. Leading consultants, OEMs & Users approve of our ability to fulfill stringent quality, cost and delivery expectations.



ISO 9001 : 2008
Certified

Lincoln Helios (India) Limited

Devanahalli Road, Off Old Madras Road,
Bangalore - 560 049, INDIA.
Tel : +91-80-3071 0000, Fax : +91-80-3071 0001
E-mail : mktg@lincolnindia.com
Web : www.lincolnindia.com



Lincoln is an SKF Group brand

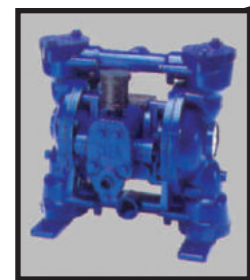
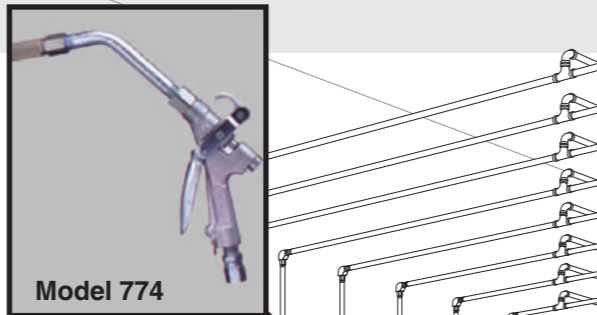
Lubrication Equipment Solutions for Vehicle Service



Providing Total Lubrication Solutions for Vehicle Service Facilities

- Professionals choose Lincoln for all their lubrication equipment requirements.
- Founded in 1910, Lincoln continues to be the worldwide leader in lubrication equipment.
- From simple to highly sophisticated installations, our solutions include all the necessary components.
- Lincoln has been awarded more patents than any other company in the vehicle service industry.
- Our products are found everywhere lubrication is needed to extend the life of a machine. Vehicle service, mining, industrial, wind power, railroad, construction, agriculture and over-the-road trucking applications all benefit from Lincoln products.
- This brochure depicts a sampling of our vast product line. Contact us for a specific bill of material designed for your maintenance facility.

Control Valves



Diaphragm Pumps



Wired or Wireless Tank Monitoring



PMV Pumps

Lincoln's LFC Family of Fluid Inventory Control and Management Systems—Available as Wired and/or Wireless Systems

A complete offering of systems to meet the varying needs of vehicle service centers! Each system offers increased control over the authorization, management and recording of fluids used to service the growing fleets of private and commercial vehicles as well as car and truck dealerships.

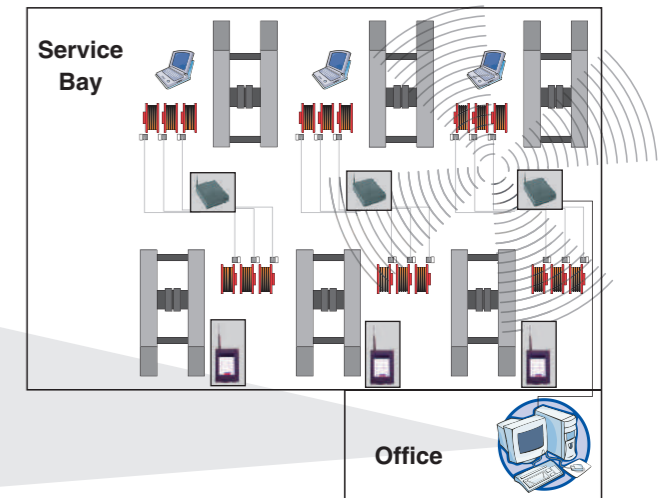
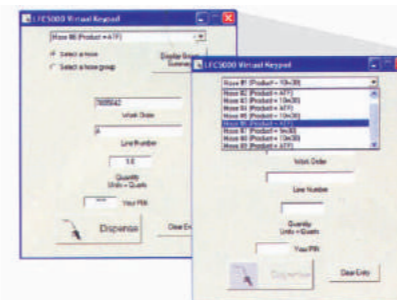
- Control systems save money and time by accurately tracking and accounting for dispensed fluids
- Choice of several unique systems to meet the varying needs of vehicle maintenance centers
- Supervisor and operator levels of security let you decide who can use, program and monitor the system
- Manage up to 32 fluids and 300 dispense locations with a single system
- LFC interfaces with facility management software and offers enhanced set-up, control and reporting capabilities



LFC 2000 – Entry-level wireless system

LFC 2500 – PC-based wireless system

LFC 5000 – Combines the dependability of a wired system with the benefits of a wireless system

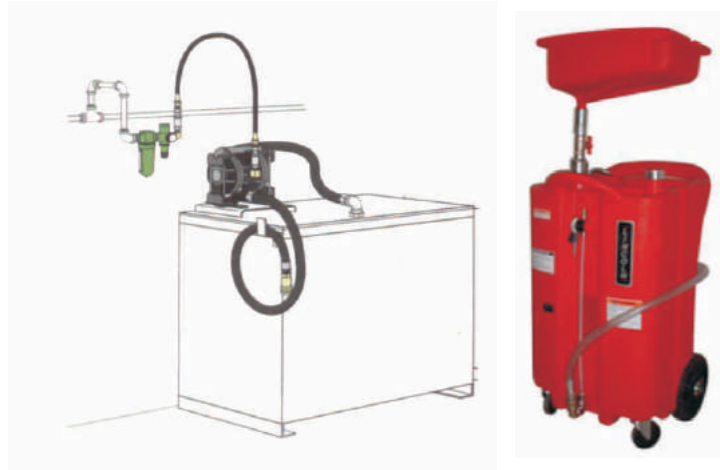


Tank Monitoring Improves Operating Efficiency

- Easy to install and integrate with existing equipment including the LFC5000 management system
- Choose from a wired or wireless system
- Wired system provides real-time tank levels
- Wireless communication capability greatly reduces installation costs
- Use with above- and below-ground tanks
- Monitors tank levels from anywhere at any time through web access and email/fax notification
- Enables “smart” demand forecasting through concise historical data
- Improves operating efficiency by optimizing ordering/scheduling logistics and fluid delivery costs
- Organizes and presents tank levels and data to unlimited authorized users in any location via a secure website



Used Fluid Receivers



Utilizing a relatively new concept in used fluid handling, the “drain and pressurize” method employs the benefits of the “drain and evacuate” system without an evacuation pump—the fluid drain is pressurized to evacuate the used fluid.

Model 3624 26-Gallon Tank

- Pressurized and non-pressurized used oil tank and bowl made from high-strength polyethylene—no dents or corrosion.
- Built-in oil filter drain, tool tray and sight gauge. Very stable and easy to maneuver.
- Pressurized unit includes pop-off valve and fixed air regulator for safety. Compatible with all lubrication fluids.

Model 3614 20-Gallon Tank

This new model simplifies the used fluid evacuation process by allowing the technician to drain, transfer and evacuate used oils with virtually no chance of spillage.

- Extra large 18-inch offset bowl easily catches fluid without repositioning the tank.

Model 84704 20-Gallon Cart

- Low profile, large 20-gallon capacity cart with 42" T-handle for easy positioning. Used oil transfer by either gravity or suction evacuation.
- Two stationary rear wheels and one front wheel caster with grab handle for ease of under-vehicle positioning.
- Metal grating, two baffles and continuous side splash guards to prevent oil spillage during vehicle draining and cart movement.
- Ideal oil drain for RV, truck or heavy equipment maintenance and repair.
- Large 20-gallon (75 L) capacity averages 15-20 vehicles before tank evacuation.



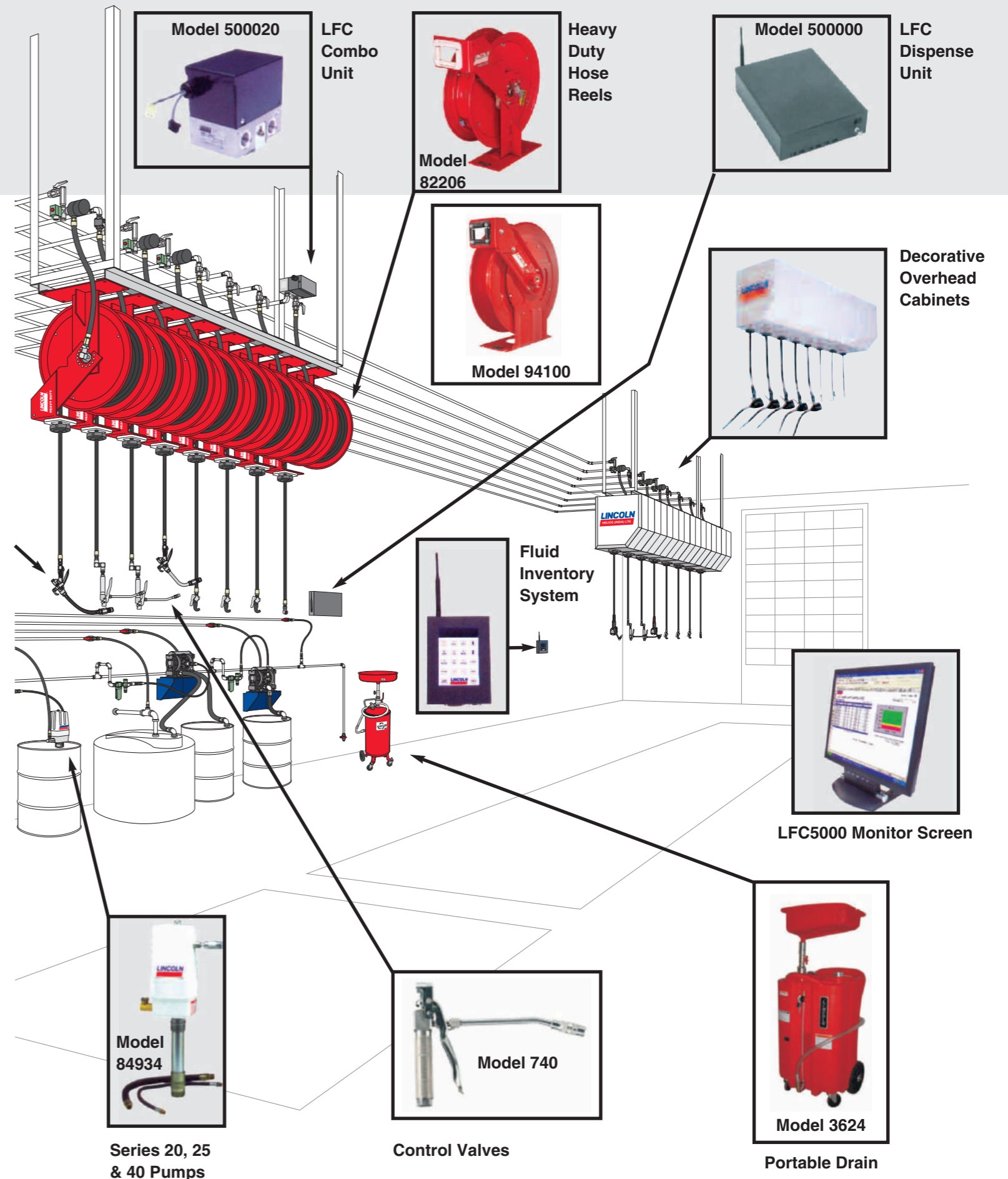
Model 84704



Model 3624



Model 3614



Model 500020

LFC Combo Unit

Heavy Duty Hose Reels

Model 500000

LFC Dispense Unit

Model 82206

Model 94100

Decorative Overhead Cabinets

Fluid Inventory System



LFC5000 Monitor Screen

Model 84934

Series 20, 25 & 40 Pumps

Model 740

Control Valves

Model 3624

Portable Drain

Lincoln Offers A Wide Range of Pumps

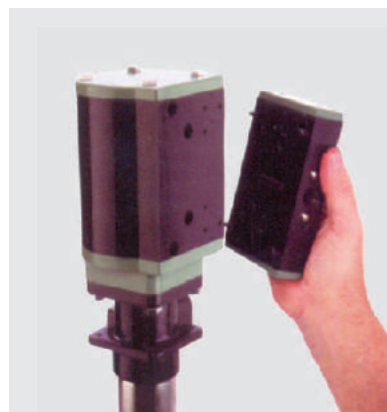
Grease Guns

Introducing the New PMV Line of Pumps – Designed for Exceptional Performance, Long Service Life and Low Maintenance Cost

Lincoln's new PMV family of oil and grease pumps represents 100 years of high-quality engineering technology and manufacturing. The unique, modular design of these pumps includes precision-machined parts made with durable materials which allows for a longer pump life.

For Oils and Greases

- Technologically advanced proven modular design
- Air control module fastened by four bolts for quick in-field repair
- Precision machined and made from aircraft aluminum for precise, durable components that are less susceptible to temperature than plastic spools
- Runs without external lubrication reducing cost of ownership and maintenance
- Designed to work with wet, contaminated, dirty air supply
- Quiet operation, meeting or exceeding OSHA requirements at all recommended operation air pressures
- Special 5-year limited warranty



Model V305000000 5:1 Bare Pump Model V406000000 6:1 Bare Pump Model V410000000 10:1 Bare Pump

- Simple Design
- Precision-Machined Parts
- Reduced Cost of Ownership for the Life of the Pump

Lincoln Grease Guns Are the Industry Leader

From the revolutionary PowerLuber®, the first rechargeable, battery-powered grease gun, to the model 1142, the first choice of professionals everywhere, Lincoln offers a wide range of grease guns that offer high-performance and great value.

LEVER-TYPE GREASE GUNS

- Rugged cast pump head for strength and durability
- Exclusive “Flip-Over” follower allows a superior seal for either cartridge or bulk loading applications
- Extra-heavy follower spring ensures positive priming and uninterrupted pump action

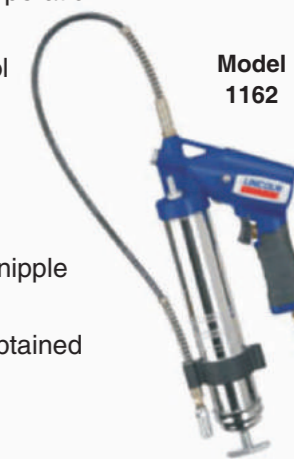


Model 1142

AIR-OPERATED GREASE GUNS

Model 1162 fully automatic pneumatic grease gun simplifies the task of lubrication.

- Fully automatic, continuous operation
- Variable-speed trigger ensures excellent flow control
- Accessible check valve assembly
- 30" high-pressure hose with coupler and attachment clip
- Includes a combination filler nipple and bleeder valve
- Superior flow performance obtained through advanced design



Model 1162

BATTERY-OPERATED GREASE GUNS

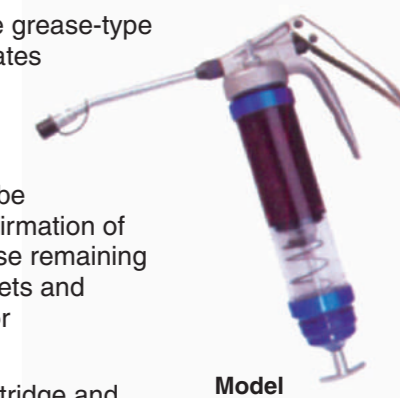
- Rugged cast pump head for strength and durability
- Exclusive “Flip-Over” follower allows a superior seal for either cartridge or bulk loading applications
- Extra-heavy follower spring ensures positive priming and uninterrupted pump action



18-Volt PowerLuber

SPECIALTY GREASE GUNS

- 100 percent positive grease-type identification eliminates the risk of mixing incompatible or unspecified grease
- The clear grease tube provides visual confirmation of the quantity of grease remaining in the tube, air pockets and grease separation or contamination
- Capable of both cartridge and bulk-fill use
- The high-strength, clear tube with aircraft aluminum end caps combines for one of the industry's most durable tube assemblies



Model 1134CLR

Control Valves & Dispensing Meters

Lincoln Offers Total-Package Solutions that Put You In Control

Fleet maintenance and vehicle service facilities require tools that withstand rugged and frequent use without sacrificing accuracy and accountability. Grease, air, oil, water, ATF, hydraulic fluids or antifreeze—Lincoln makes control valves and dispensing meters that handle it all to keep things flowing smoothly.



Lincoln's 8 GPM and 12 GPM Fluid Meter Series

- These meters feature a unique design to allow exceptionally high flow rates.
- Coupled with high 1,500 psi operating pressure, these meters reduce dispense time while improving productivity and user safety.
- The Fluid Meter Series enhances safety with working pressures 50 percent higher than other meters.
- Offered in electronic and mechanical models, the meters are available with rigid or flexible hose extensions and feature an ergonomic design for operator comfort.
- All units have a ball-bearing swivel and a removable filter screen to capture contaminants.
- All fluid meters are covered by a 5-year warranty.

CONTROL VALVES

Grease



Model 3050



Model 740

Oil



Model 282930
High Flow

Model 758F

Model 708R

Model 712R

CONTROL VALVES

Electronic



Model 905
Preset



Model 967

Model 954

Model 280690
High Flow

Mechanical



Model 878



Model 877



Model 3867
Preset

PowerMaster® III Pumps – High-Volume, Heavy-Duty Family of Pumps

Building on the success of the standard drum pumps, Lincoln has taken their design into the 21st century with completely pneumatic, modular air motors and six-inch stroke pumps for greater material output. Both air-operated and hydraulically operated models are available.

For Oils and Greases

- Multiple ratios offer the most precise combination of volume and pressure
- Available to fit any drum, pail or tank
- AirBrake® to stop pump if container runs dry
- Full 6" stroke delivers excellent volume with fewer pump cycles
- Air motors are available in 3-, 4-, 6- or 8-inch (76-, 101-, 152- or 203-mm) diameters
- Quiet operation, meeting or exceeding OSHA requirements at all recommended operation air pressures



Model 2004

PileDriver® Pump – For Heavy-Duty, Extreme Volume Applications

For high-volume applications of viscous materials such as grease from standard drums or bulk tanks, these industry-standard pumps incorporate the same completely pneumatic modular air motors as our PowerMaster family.

For Oils and Greases

- Same unique features/benefits of PowerMaster III air motors
- Additional air motor offering 10" (254 mm) diameter
- Special pump tubes allow for high volume deliveries of oils and greases, up to 27.6 gallons per minute

Model 2014



Model 84921

Diaphragm Pumps – Ideal for Fluid Transfer and Evacuation

- Perfectly compatible with antifreeze, windshield washer solvents and other water-based fluids
- Applicable models can be grounded for safety and to meet local codes
- Self-priming with variable flow
- Able to run dry without damaging the pump
- Multiple flow rates to match job requirements
- Able to dispense exceptionally high gallons-per-minute flows
- Explosion proof – eliminates sparking concerns of electrical or rotating pumps
- Can be mounted on container or wall



Model 85634

Lincoln Hose Reels – One For Every Need

Lincoln Fluid Reel Series (LFR) – Engineered for Exceptional Performance

- Advanced design provides consistent, repetitive performance
- Engineered for durability and reliability
- Low, medium and high-pressure models available



Dual needle bearings reduce the Model 94100 stress on the spring, providing smooth, balanced operation during both hose extension and retraction.



Double ratchet teeth provide solid latch to lock hose in multiple usable positions.



Dual Support Reels – Extra Stability for Rugged, Demanding Applications



The Dual Support Reel utilizes the same technology as Lincoln's dependable 94000 reels. These new heavy-duty reels include a dual arm and dual pedestal to give the added stability needed for demanding environments.

The three-point bolt design on the support arm allows for easy installation of the delivery hose and provides instant access to the reel's working parts.

- Design based on the proven 94000 Series reels
- Dual support from base to axle to roller outlet provides stability for applications with heavy vibration and impact
- Slotted base for easy installation

Heavy-Duty Reels – Our Toughest, Long-Life Reels

The Heavy-Duty Series reels are the finest Lincoln lube reels ever designed. Years of engineering, testing and experience preceded their introduction. Years of exceptional performance in the most demanding environments have proven their value.

The quality and reliability the professional expects from Lincoln is not only met but exceeded in form and function by the HD Series. Value, long life and top performance were the criteria demanded before these incredible reels were released.

You should expect the best from Lincoln...the HD Series reel delivers it.

- All bare reels rated for high, medium and low pressure
- Reel assemblies available in standard 30', 40', 50' and 60' hose lengths
- Dual needle roller bearings
- Ball bearing inlet swivel design
- Quarter-inch thick steel welded base and roller outlet arm
- Backed by a 5-year limited warranty



Model 82206

High Capacity Reels – Extra-Heavy-Duty Reels for Applications That Require Longer Hose Capacity

- These industrial strength hose reels are designed for applications that require longer hose length
- Models available to work with hose lengths up to 75'
- Ideal for service trucks, transit facilities and large fleet shops
- Dual support from base to axle to roller outlet provides stability for applications with heavy vibration and impact
- Low-, medium- and high-pressure models available
- Also available – super-duty fuel reels with hose and nozzle



Model 94400DS